



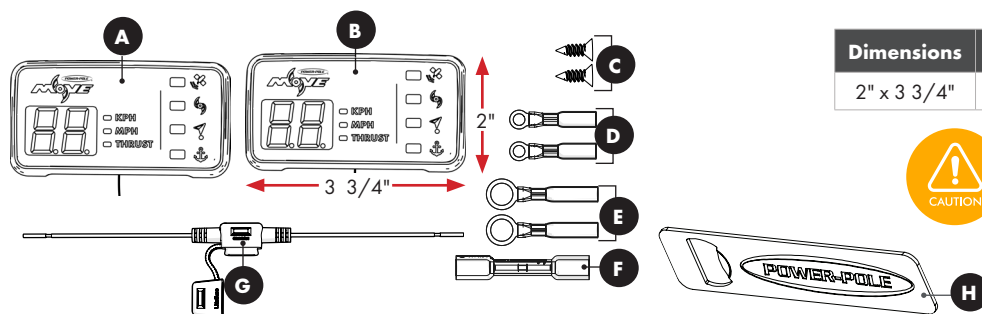
WIRELESS INFO DISPLAY INSTRUCTIONS

TOOLS

- Fine-tip Marker
- Electric Drill
- 7/32" Drill Bit
- 7/64" Drill Bit
- #2 Phillips-Head Bit

INCLUDED HARDWARE

QTY.	LABEL	ITEM #	DESCRIPTION
1	A	SA-0046	Info Display
2	B	AVG-MP-0608	Info Display Base
2	C	AVG-MH-SC-0298	#8 x 1/2" Phillips Head Screw
2	D	AVG-MP-1013	Heat Shrink Ring Terminal, 18-22 AWG, 3/8"
2	E	AVG-MP-1014	Heat Shrink Ring Terminal, 18-22 AWG #10
1	F	AVG-MP-1002	Heat Shrink Butt Connector, 18-22 AWG
1	G	AVG-MP-0935	Fuse Holder, ATC, and ATO 18 AWG Red Lead
1	H	magnet-bot-PP	Pairing Magnet



Dimensions	Cord Length	Wire Gauge	Fuse Size
2" x 3 3/4"	~4 ft.	20 AWG	2 Amp Mini



Check the area beneath where the Display will be mounted to ensure there are no hoses, wires, lines, tanks, or other sensitive components.

DRILL MOUNTING HOLES

STEP 1 Choose a flat surface with adequate space to mount the Info Display.

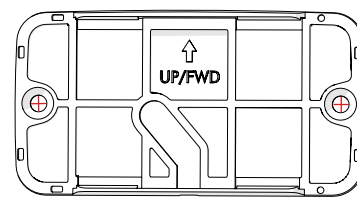
STEP 2 Lay the mounting template in the desired mounting location and drill pilot holes for **Mounting Screws C** using a **7/64" drill bit**.

IMPORTANT! If installing to gel-coat, follow the drilling procedure in **Appendix A** of the **Installation and Owner's Guide** to ensure you do not crack or chip the gel-coat.

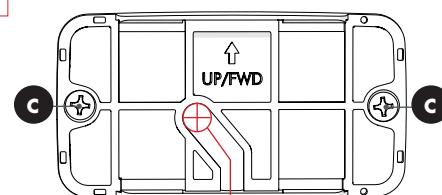
PREFERRED INSTALLATION (Installing Wire Through Boat)

STEP 1 Using a **#2 Phillips Head Screwdriver**, install **(2) Screws C** and tighten until flush.

STEP 2 Drill routing hole for wire with a **7/32" Drill Bit**.



Mounting Holes



Hole for Wire

Need help? Contact our Technical Support Team at **1 + 813.689.9932 Option 2**



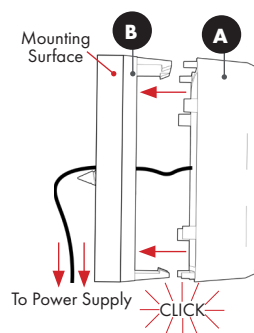
WIRELESS INFO DISPLAY INSTRUCTIONS

INSTALL AND CONNECT DISPLAY

(If Installing Wire Through Boat)

Route wire through hole and snap the **Info Display Assembly** **A** into place.

IMPORTANT! Once Display is snapped into place, it cannot be disassembled.

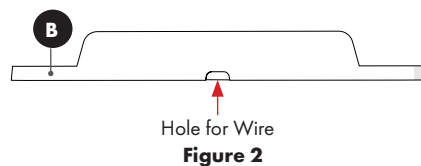
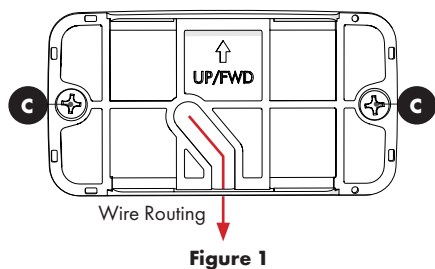


ALTERNATE ROUTING (Routing Wire out of Base)

STEP 1 Using a #2 Phillips Head Screwdriver, install (2) Screws **C** around halfway, so that you can still slightly pick up the base. **FIG 1**

STEP 2 Lift Base **B** and route the display wire through the hole in the bottom of the Base **B**. **FIG 1/2**

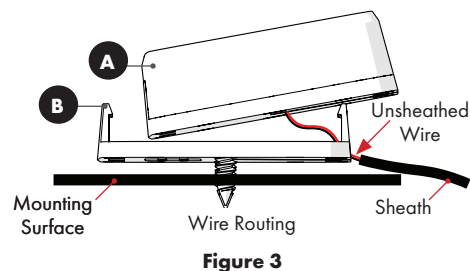
STEP 3 Pull the wire all the way through the Base **B** so the end of the sheath is completely out of the Base **B**. **FIG 3**



Base **B** (Bottom View)

STEP 4 Fully tighten Screws **C** flush, ensuring the sheath does not get pinched between the Mounting Surface and Base **B**.

STEP 5 Snap the Info Display Assembly **A** into place.



Need help? Contact our Technical Support Team at **1 + 813.689.9932 Option 2**



MOVE WIRELESS INFO DISPLAY INSTRUCTIONS

CONNECT TO POWER

NOTICE: Follow **Appendix B** of the **Installation and Owner's Guide** for proper ring terminal and butt connector installation procedures.

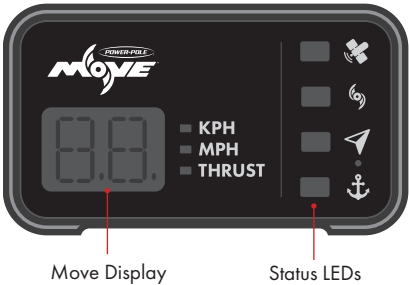
- STEP 1** Route wire to power.
- STEP 2** Attach the **Fuse Holder G** to the **positive (+)** lead from the **Display A** using **Butt Connector F**.
- STEP 3** Depending on post size, attach either **Ring Terminals D** or **E** and connect to power, connecting the **positive (+)** lead to the positive post and **negative (-)** lead to the negative post.

NOTICE: All Move accessories are compatible with 12v, 24v, and 36v systems.

MOVE DISPLAY

The Move display is used to show a variety of information such as thrust/speed and error codes. The display will show thrust in an interval of 1-20 by default.

Motor propulsion speed can be controlled by thrust or KPH or MPH (Configurable in the app).



NOTICE: Depending on battery configuration and voltage, your speed setting may not go up to 20.

PAIRING PROCEDURE

The Info Display comes pre-paired to the Move. However, if you need to pair a display, wave **Pairing Magnet H** up and down above the LEDs. **This will open a 10 second pairing window.** During this time, the display LEDs will flash as shown. Finally, tap the **<** and **>** on the remote at the same time, opening the pairing window on the Move. The display will beep twice, indicating it has been paired.

NOTICE: To open the pairing window, the Hybrid Remote must be within 2ft. of Base Circuit Board.

LED	NAME	FUNCTIONALITY
	GPS Signal	Solid Blue Good GPS Signal Flashing Blue Poor GPS Signal Flashing Yellow No GPS Signal
	Prop	Solid Green Prop On Solid Orange Reverse On
	Navigation Mode	Solid Teal Navigation Mode On
	Anchor Mode	Solid Yellow Anchor Mode On

