



SWIFT. SILENT. SECURE.

# EVERFLEX™ SPIKE REPLACEMENT INSTRUCTIONS

- For all Power-Pole Anchor Models Excluding Blade Models

## Installation Tools:

- 7/16" Wrench
- Ratchet
- Flat Punch
- 7/16" Socket
- Lubricant
- Hammer

## REMOVAL:

**STEP 1** Remove both **Spike Bolts** and all mounting hardware using a **7/16" Socket & Wrench**. **FIG 1**

**STEP 2** Drive the defective **Spike** out of the **Knuckle** by inserting a flat punch into the hole on top and driving it with a hammer. .

## INSTALLATION:

**STEP 1** Apply a lubricant such as Green Marine ISO 32 Hydraulic Fluid to the top portion of the **Spike** and insert the **Spike** into the **Knuckle**.

**STEP 2** Reinstall the mounting hardware and tighten the **Spike Bolts** snug. **FIG 1**

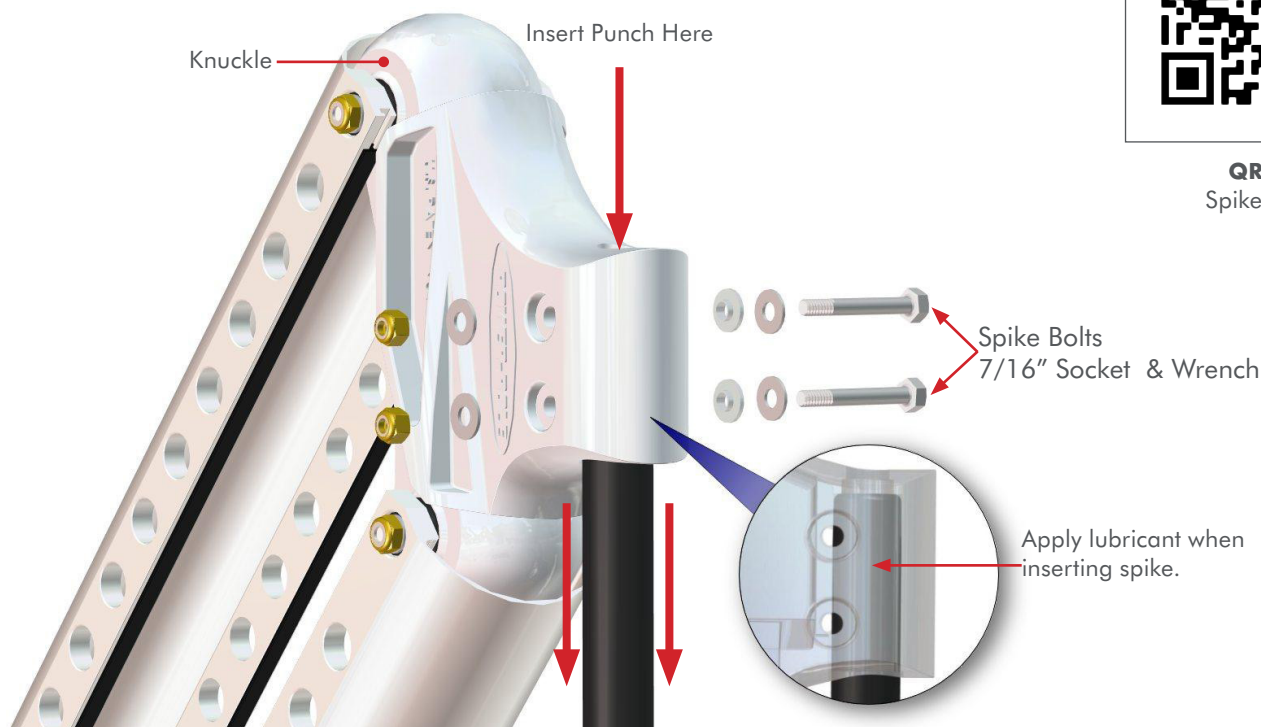


DO NOT touch the spike with bare hands.

**IMPORTANT!** Replace any hardware that is worn or damaged. Always replace nylon lock nuts. To order proper hardware, scan QR Code A.



**QR Code A**  
Spike Hardware



**Figure 1**

Need help? Contact our Customer Service Team at **1 + 813.689.9932 Option 2**