



SWIFT. SILENT. SECURE.

BLADE KNUCKLE REPLACEMENT INSTRUCTIONS

NOTICE: No mounting hardware is included in this kit.

REMOVAL:



DO NOT touch the spike with bare hands.

Installation Tools:

- 9/16" Wrench
- 9/16" Socket
- 7/16" Wrench
- 7/16" Socket
- Ratchet
- Spreader Block

STEP 1 Remove the hardware that attaches the **Spike** to the **Knuckle** using a **7/16" Socket & Wrench**. **FIG 1**

NOTICE: Be sure to safely store mounting hardware if reusing.

STEP 2 Pull the **Spike** out of the **Knuckle**.

STEP 3 Remove the hardware that attaches the **Knuckle** to the **U-Channels** using a **9/16" Socket & Wrench**. **FIG 2**

STEP 4 Insert the **Spreader Block** into the **U-Channel** and twist it to remove the defective **Knuckle**. **FIG 3**

INSTALLATION

STEP 1 Apply a lubricant such as Green Marine to the top portion of the **Spike** and fully insert it into the new **Knuckle**.

STEP 2 Install the **Spike** mounting hardware in the proper order and tighten snug using a **7/16" Socket & Wrench**. **FIG 1**

STEP 3 Use the **Spreader Block** to insert the **Knuckle** into the top **U-Channel**. Install all upper hardware. **FIG 2**

STEP 4 Repeat **STEP 3** for the bottom **U-Channel**. Tighten all nuts flush with bolt ends. **FIG 4**

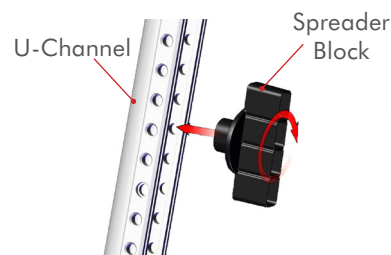


Figure 3

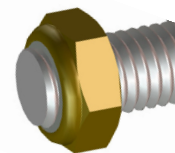


Figure 4



Figure 1

IMPORTANT: The new knuckle will not require these plastic Bushings on the nut side.

7/16" Socket & Wrench

Apply Green Marine Fluid or grease to top portion of spike before inserting.

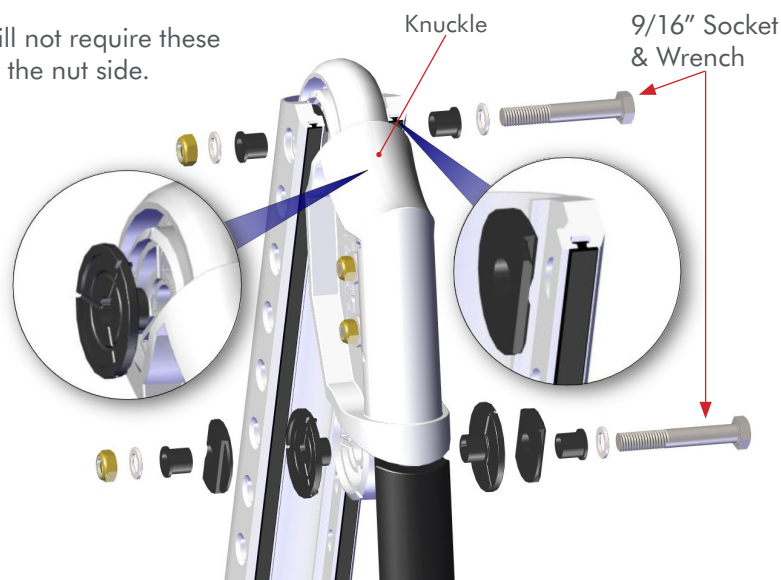


Figure 2

Need help? Contact our Customer Service Team at **1 + 813.689.9932 Option 2**